



X_RAY SOLUTIONS

The Complete Answer to All Radiological Needs

index

company
profile

CLINODIGIT
OMEGA

digital
radiography DR

digital
radio_fluoro

traditional
imaging

mobile
systems

mammography

service



35+ years of excellence

A "MADE IN ITALY" SUCCESS STORY

ITALRAY Srl was founded in 1974 with the goal of manufacturing high-quality x-ray systems, 100% made in Italy. ITALRAY headquarters and main production facilities are located in Scandicci, in the greater Florence metro area. ITALRAY's core business is Medical Imaging with a special focus on Digital X-ray Imaging. ITALRAY activities range from product development to manufacturing, commercialization, installation, and service: we take care of our products throughout their entire lifecycle.

X-RAY SOLUTIONS

ITALRAY's R&D department is always working on the cutting edge of technology to make sure that ITALRAY products are always technologically advanced, highly reliable, and with a very competitive total cost of ownership. ITALRAY offers to its customers worldwide a complete answer to their radiological needs: from small mobile units to X-ray generators, tilting tables, digital fluoroscopy systems, and up to complete digital radiography rooms. At ITALRAY we understand that customers don't need just products, they want SOLUTIONS.

QUALITY

To ensure complete customer satisfaction, all ITALRAY processes, from design to production and service, are performed in compliance with the highest quality standards. ITALRAY's Quality System is in compliance with the requirements of the European Directive 93/42/CEE on medical devices and every single ITALRAY product is CE marked. ITALRAY's corporate Quality System is also in compliance with the European Norm ISO13485:2003 which specifies the guidelines for application of the ISO9000 standards in R&D, design, manufacturing, installation, and service of medical devices. ITALRAY is also compliant with the European Directive 2002/96/CE, also known as WEEE (Waste Electrical and Electronic Equipment). Over the years ITALRAY has also obtained product and system certifications in several foreign countries where ITALRAY is commercially active. The radiologists of more than 60 countries worldwide are using ITALRAY products with complete satisfaction.

Multifunctional DR + DRF System with
Dynamic Flat Panel Detector



One system
All examinations
No compromises

CLINODIGIT OMEGA
Multifunctional DR+DRF System
with Dynamic Flat Panel Detector

- 90°/90° Tilting
- R/F Exams on Table Top and Mobile Table
- Very low Table Top height
- Chest Exams in contact with detector
- Focal Distance up to 200 cm
- R&F 43x43cm Digital Flat Panel Detector
- everest-X image Enhancement processing
- Image Stitching Package *
- Full DICOM

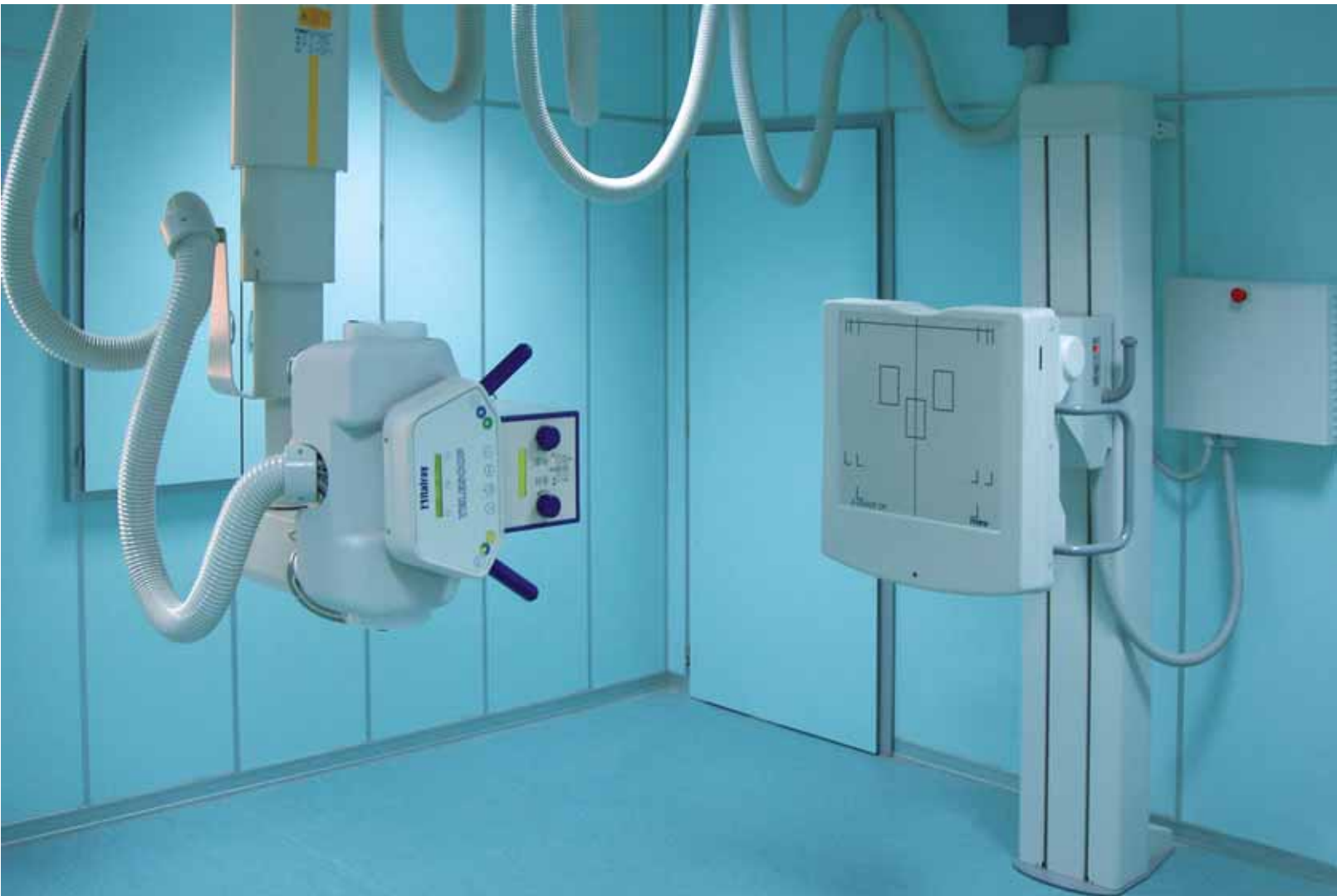
* option



- CLINODIGIT OMEGA* is a
- digital fluoroscopy system
 - digital radiography system
 - digital chest imaging system
 - digital emergency room system



digital radiography DR



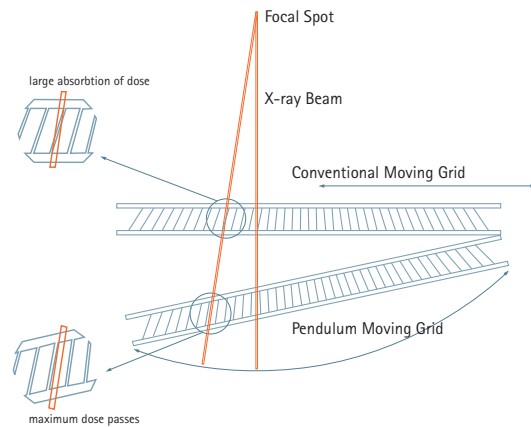
_ X-Frame DR digital radiography product line

- solid state flat panel detector
- exceptional image quality
- a-Si technology with CsI scintillator
- 43cm x 43cm detector size
- diagnostic image available in 3 seconds
- extremely high productivity
- reduced patient dose
- anatomical acquisition modes

_ X-Frame DR advanced features

- RIS integration
- complete DICOM connectivity
- special pediatric acquisition modes
- integration with 3rd party CR systems
- image stitching *
- automatic dose measurement and archiving *
- large & redundant local image archive
- remote online support & service *

* option



INSTAfocus grid system



before everest-X



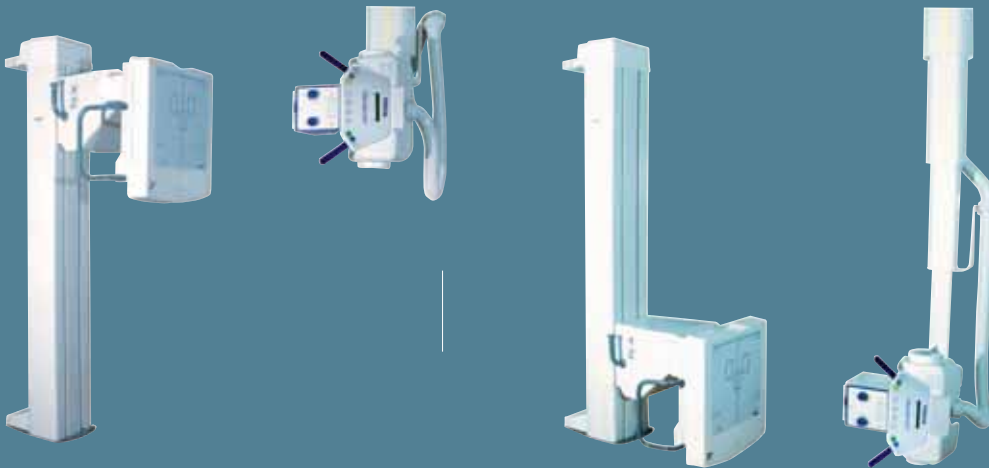
processed with everest-X

_ everest-X image processing engine

- image latitude enhancement
- substantial improvement of image diagnostic content
- clinical details visible in high-attenuation and low-attenuation image areas at the same time

_ INSTAfocus grid system

- innovative pendulum grid movement
- grid always 100% in-focus
- geometrical dose reduction
- one grid fits all examinations



_ X-Frame DR-T
trauma and general X-ray DR system

- composed of:
 - ceiling tube suspension
 - multifunctional stand
 - mobile patient table
 - motorized detector rotation
- all exams and a complete room with only one DR detector
- horizontal and vertical operation
- 90°/-20° motorized stand tilting
- fully automatic motorized system movements with predefined working positions *
- automatic collimation
- optimized workflow
- minimal footprint & space requirements
- especially studied for emergency departments
- wide imaging area for trauma patients

* option



_ X-Frame DR-2T
trauma and general X-ray DR system

- composed of:
 - ceiling tube suspension
 - multifunctional stand
 - elevating patient table
 - mobile patient table
 - motorized detector rotation
- dual detector DR system
- extraordinary productivity
- 90°/-20° motorized stand tilting

- automatic tube-detector centering
- fully automatic motorized system movements with predefined working positions *
- automatic collimation
- optimized workflow
- studied for all applications
- wide imaging area for trauma patients
- stitching for Full-Leg and Full-Spine imaging*

* option



_ X-Frame DR-2S
general X-ray DR system

- composed of:
 - column tube stand
 - vertical stand
 - elevating patient table
- dual detector DR system
- extraordinary productivity
- automatic tube-detector centering
- automatic system movements
- automatic collimation
- especially studied for general X-ray applications



X-Frame DR-M

Trauma and General X-ray DR system
with flat panel detector

- lightweight and easy to handle
- 35x43cm digital flat-panel X-Ray detector
- wire less operation
- maximum flexibility for difficult or unusual x-ray projections
- available in single or dual detector configurations

X-Frame DR-U

emergency and general X-ray DR system

- U-arm multifunctional stand with mobile X-ray table
- fully motorized system movements with predefined working positions
- remote control
- high flexibility throughout a wide range of movements
- easy positioning of the x-ray tube
- for supine, upright and lateral projections.

digital radio_fluoro

_ X-Frame CCD digital fluoroscopy system

- 1024x1024x12 bit acquisition matrix
- up to 60 fps
- advanced processing algorithms
- anatomical acquisition modes
- DSA and cardio packages available
- large & redundant local image archive
- complete DICOM connectivity



_ pixel HF TS high frequency X-ray generator

- 200 kHz output
- 1 or 2 tubes
- up to 100 kW 1000 mA 150 kV
- continuous and pulsed fluoroscopy up to 60fps
- AEC, 9000rpm hss
- ergonomic console with exposure and safety info
- anatomical programs
- touch screen console





_clinodigit family
remote controlled tilting table line

- clinodigit compact: 90°/30°
- clinodigit evolution: 90°/90°
- elevating table, tomography
- image intensifier elevation system
- 100% microprocessor controlled
- I.I. sizes available from 9" to 16"

traditional imaging

_ telescop

ceiling suspended telescopic tube stand

- large area covered with standard rails
- motorized synchronized movements *

* option



_statix _bt _bte

vertical tube stand and 4 way radiographic table

- fixed or variable height
- ergonomic controls
- upgradeable to DR



_ tieton
multifunctional stand

- 90°/-20° stand tilting
- automatic bucky rotation
- horizontal and vertical operation
- automatic centering/movements
- minimal space requirements
- especially studied for emergency departments
- upgradeable to DR



_ clinomat 2000
90°/15° conventional tilting table

- image intensifier up to 12"
- electronic or electromechanical spot film device

mobile systems



_carmex
mobile c-arm

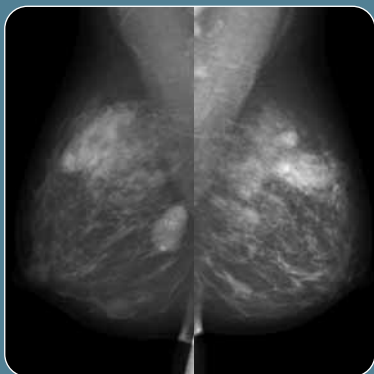
- 7", 9", or 12" image intensifier
- fixed or rotating anode
- 1k x 1k version available
- many digital memories available
- 15 KW cardiac version available
- DSA and advanced processing algorithms
- DICOM connectivity



_corsix _corsix R
Mobile radiographic system

- up to 32 KW
- 100% microprocessor controlled
- touch screen control panel
- x-ray monoblock arm rotation: +/- 90°

mammography



_ mammograph

100kHz mammographic unit

- isocentric c-arm
- automatic rhodium-molybdenum filter
- bi-angular microfocus X-ray tube
- zero point technique
- stereotactic biopsy available

_ mammograph FFDM

Full Field Digital Mammography system

- Direct Conversion Full Field Flat Panel Detector
- 18x24 or 24x30 a-Se flat panel detector
- Biangular X-Ray Tube with Tungsten anode
- Fully motorized isocentric C-Arm
- FULL DICOM
- stereotactic biopsy available
- Rh/Ag filtration

service

Radiological systems typically have a long life span and need to be always maintained in perfect conditions. At ITALRAY we are perfectly aware of this need and our experienced service engineers will follow all ITALRAY systems and keep them always in fully working conditions both directly and via remote diagnostics.

ITALRAY service department is famous for its extremely fast response time and very accurate interventions. This is also made possible by the always fully stocked spares warehouse. In addition to that, ITALRAY carries an inventory of numerous X-ray tube types and models, both ITALRAY branded and from other major producers, and is capable to fulfill any X-ray tube necessity that may arise.

ITALRAY can also offer a wide range of service plans ranging from periodical inspections and checkups, up to complete full risk packages. Whichever the customer needs are, there is always an ITALRAY service plan that best fits them.

Italray



Housing No. **C070D**

Filtr. 1.2 AI + 0.3 AI = 1.5 AI 15C

Italray

Tube No. **40D329**

■ 0.6 ■ 1.5 10000 rpm



ITALRAY Srl
Via del Parlamento Europeo, 9D
50018 Scandicci (Florence)
Italy

Tel +39 055 7228511
Fax +39 055 7228512
info@italray.it
www.italray.it

